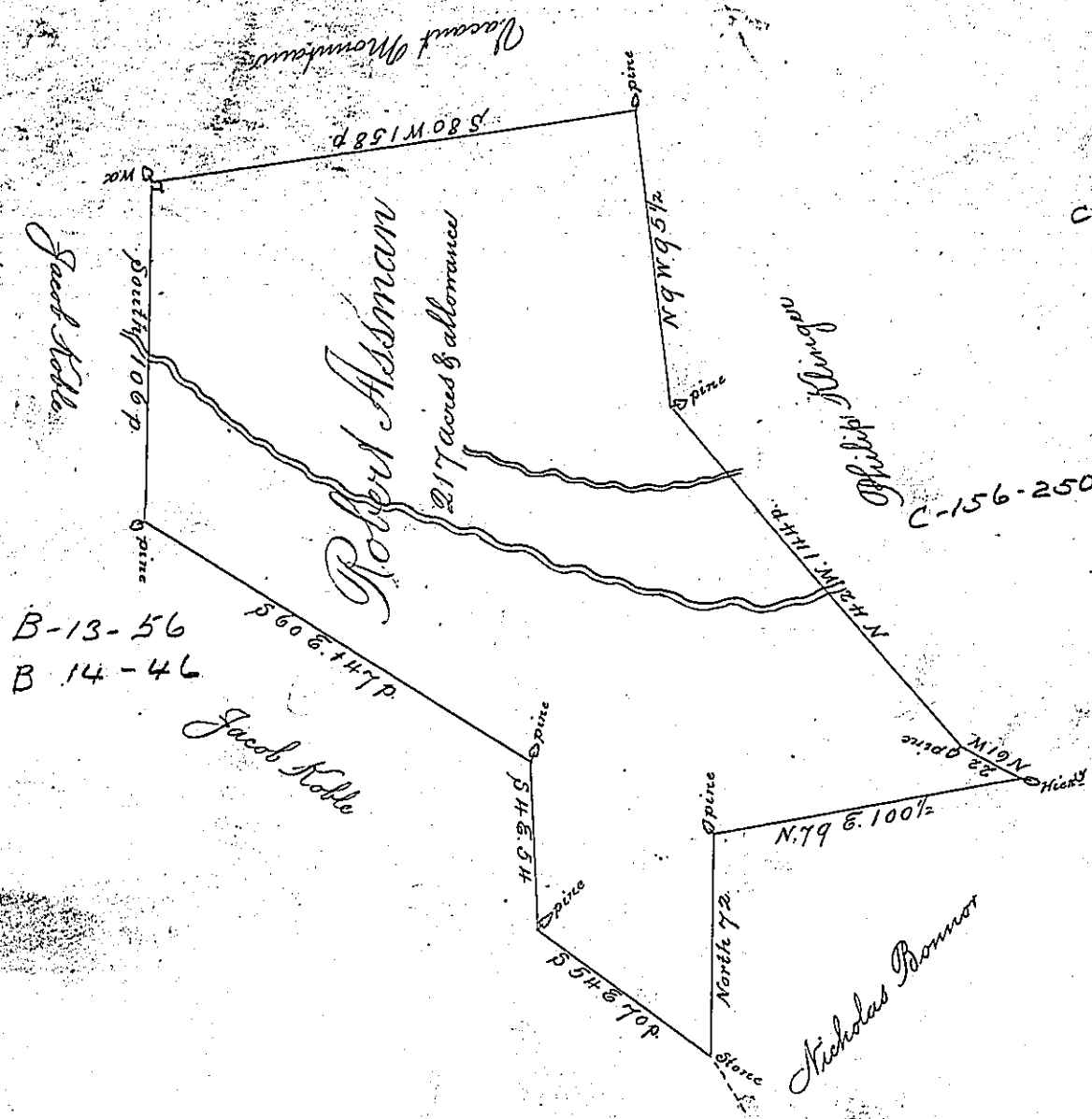


C-156-261



C-97-247+r ?

C-156-250

B-13-56  
B-14-46

By Virtue of a Warrant dated the 26<sup>th</sup> day of September 1789 Surveyed the 2<sup>d</sup> day of November 1789 To Robert Assman the above described Tract of Land Situate Lying near the Mahantongo Mountain in the County of Dauphin Containing Two Hundred & Seventeen acres & allowances  
 Thomas Clark D.S.

To Daniel Brodhead Esquire }  
 Surveyor General of Pennsylvania }

IN TESTIMONY that the above is a copy of the original remaining on file in the Department of Internal Affairs of Pennsylvania, made conformably to an Act of Assembly approved the 16th day of February, 1833, I have hereunto set my Hand and caused the Seal of said Department to be affixed at Harrisburg, this  
 fifth day of August 1892



James W. Latta  
 Secretary of Internal Affairs